



# Go from palettes to products faster and more accurately than ever before!



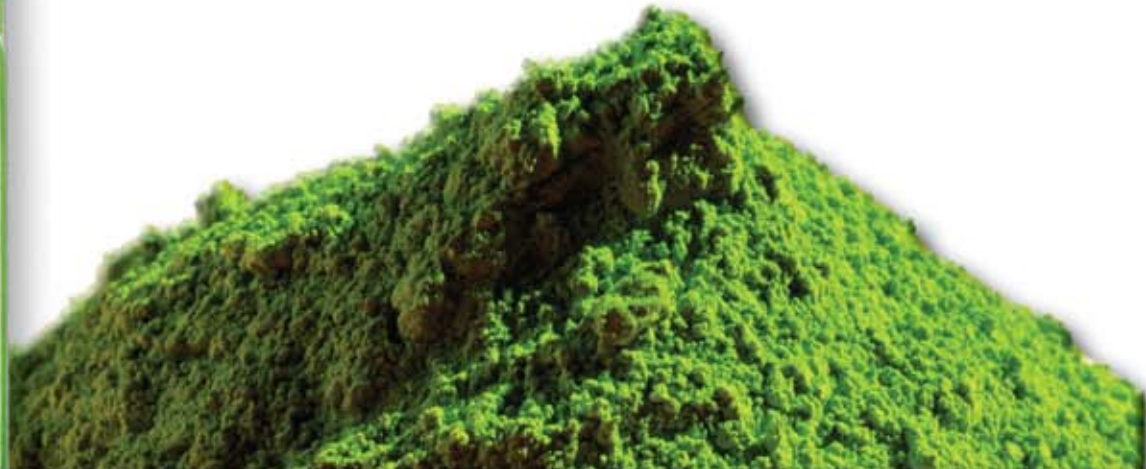
## Electronic sample submits at a fraction of the cost!

Electronic color communication just got easier for a whole lot less... on-screen color – now with texturing. You can accurately simulate color and texture electronically. But here's the best news... you can share these real-life simulations at a fraction of what other stand-alone simulators cost. Plus, it's built into the Color iMatch software. So, unlike other simulators, it doesn't require a separate program.

## A breakthrough in personal productivity for color formulation.

Color iMatch quickly delivers the color your customers expect in the lab and on production. Color iMatch eliminates lost productivity from operator turnover and raw materials changes. You'll turn around color faster and more accurately, plus:

- Optimize every formula for cost and color accuracy
- Optimize color lab resources
- Achieve consistent color with less effort



## Formulate locally... collaborate globally – across devices, locations and processes.

Collaborate more effectively with customers and suppliers. Color iMatch connects you to your entire supply chain. It's compatible with most popular data formats and easily interfaces with upstream design applications and downstream laboratory and QA applications.

**Real World Example:** You're doing business with a new specifier, but they're using a different color control system. With Color iMatch, it doesn't matter. You can easily communicate color with all your specifiers using the most popular data formats. So a Color iMatch investment lets you work with many more specifiers.

## Match more colors... faster!

Half the time matching color is spent determining what each customer wants. Color iMatch automatically remembers each customer's parameters so you can manage them faster and easier. Plus, it automatically remembers the information you need in the layout you prefer.

**Real World Example:** Matching concept colors means choosing a recipe that minimizes flare. You can easily set this criterion on any job and Color iMatch will automatically provide the optimum recipe = no guesswork or wasted time.

## Match more colors... easier!

Job-driven workflows mean the software adapts to your process flow – you don't have to change your processes to fit the software. Color iMatch is configurable for all proficiency levels from beginner to head dyer.

And Color iMatch easily adapts by operator function. Whether you're in production control or laboratory formulation, you have the flexibility to simplify what you see.

**Real World Example:** You've developed a good laboratory match, but aren't sure how it will reproduce in production volumes. Color iMatch can show you. Plus, Color iMatch lets you anticipate production shifts and easily adjust your recipe to compensate.

## Match more... period!

The Color iMatch incredible matching engine gives you more color formulation latitude. It's the intelligent solution for today's quick turn seasonal or trend colors.

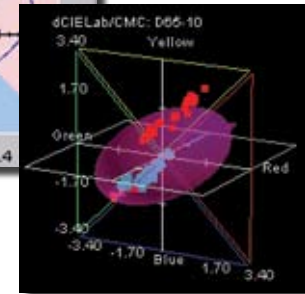
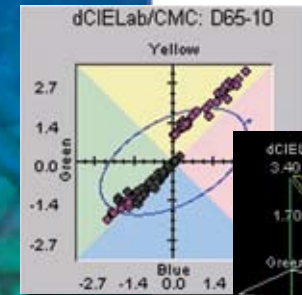
**Real World Example:** You're matching a bright red in a cotton poly blend and 100% cotton. Color iMatch automatically compensates for the dye behavior on each substrate. The result... different formulas but the same color – and minimum metamerism.

## Guard against technology

**lockout.** Color iMatch is part of the GretagMacbeth commitment to innovation. The software is updated frequently to ensure compatibility with rapid technological advances. In fact, your first year's update is free!

## New Manager Versions

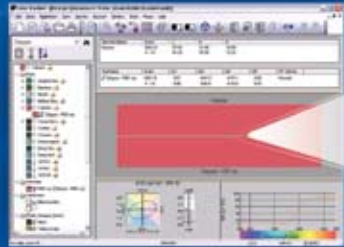
You don't have to invest in a complete system just to view data. Any Color iQC or Match system is available in a convenient manager version, so you can see what's happening in the lab or production without leaving your office.



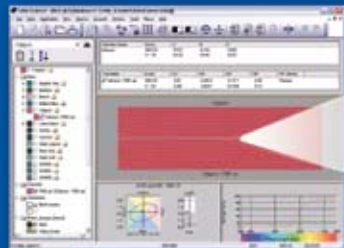
## Logical Tolerancing

increases approval rates. It lets you predict what your customer will approve. Plus, the 3D plot helps you better manage acceptable variations within a batch.

# There's a Color iMatch to Optimize Every Color Program



Before texturing



After texturing



**Will your customer accept this?**

On-screen color helps you decide. It simulates how your product will look with texture added.

## Color iMatch Standard

The most effective solution for the widest range of raw materials and colorants.



## Color iMatch Professional

Includes all the standard features plus on-screen color electronic color communication module – now with new texturing option.

## Color iMatch Companion Editions

**Color iMatch Manager** – See what your lab is producing without leaving your office. Unique system lets you view and comment on all color matching activity without the need for an instrument or colorant file.

**Color iMatch Satellite** – What every production facility needs to correct formulas. Time-saving application lets you easily compensate for production color shifts that commonly occur from bulking up a laboratory recipe.

## New Knowledge Base

Speeds color matching and boosts productivity.

Build your matching expertise into every job.

Transfer knowledge gained from one job to the next so all operators benefit.



## New Online Color Matching

## Cut System Administration in Half

Now you can match color over your WAN or LAN. Centralize control of your data but allow shared access with other facilities, suppliers... even customers.

Plus, it's fast and secure!

And with the new Knowledge Base, you can also share your color matching expertise by building it right into every job.

### And here's the best part...

you'll save hours in admin time.

No clients, applets or software discs.

You simply assign passwords

– everything runs directly from your server. It's remote control color control!

### All you need is one system. You control the rest!

- Add as many users as you need – without compromising speed.
- Assign access privileges based on your parameters such as experience level, job function and more.
- Provide real-time system updates to your entire network in just minutes!
- Centralize your data and eliminate cumbersome, inaccurate data silos.



## solutions for a reliable digital workflow

